

New Year New Career in 2025!



SCAN QR
for Website

Adult Skilled Trades Classes

January 27 - May 6, 2025

Classes in Lockport

Classes in Niagara Falls



ELECTRICAL

Days M, T, W, Th 9AM-1:30 PM

Nights M, T, Th 5:30-9:30 PM

Foundations of electricity: resistance, capacitance, inductive circuit analysis, AC and DC theory, and simple series/parallel circuits. Basic training leads to residential wiring.

216 hours (day course)
160 hours (night course)



HVAC

M, T, W, Th 6-10 PM

Introduction to HVAC careers, tube and piping skills, duct work, basic air flow, oil heating, forced air, troubleshooting and preventive. Train for EPA refrigerant certification. 216 hours



Classes in Sanborn

AUTOMOTIVE TECH

M, T, W, Th 4-8 PM

Introduction to basic auto mechanics and diagnostics: suspension, engines, heating and cooling, wheel balancing, and diagnostics for New York State inspectors license. 216 hours

BUILDING TRADES

M, T, W, Th 8 AM - noon

Introduction to building trades, tool and equipment safety, construction and building materials, building codes, blueprints, rough framing, electrical wiring, drywall, and finish work.

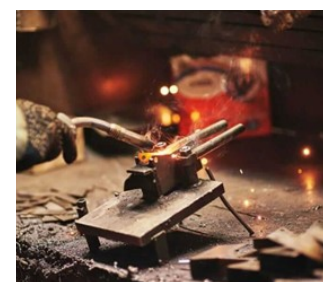
216 hours



WELDING

M, T, W, Th 4-8 PM

Theory and practice of stick welding: set-up and operation, basic MIG and TIG in basic welding positions. 216 hours



MACHINING AND CNC

M, T, W, Th 4-8 PM

Introduction to the basics of machining on mills, lathes, and CNC (Computer Numerical Controls)

216 hours



Healthcare Classes in Lockport and Niagara Falls

Classes start as filled - Call for start dates

Nurse Assisting 135 hours

Vaa^A[~IAa^Ac] / q d A@A^aBeda\[-^..q] EA
O[~^A/B c^] A@[-] BaaBaa aA^] A^ca^a/Ba BaaA
^c] A^a} &^A/B A[-] * EA[-] Aa aAQ{ ^Baa^A^aa} *E



D\Wtca m 70 hours

V@[-] EAaaBaa a/Ba BaaA\ q] A^ A
] A^[-] A^} q ~] &c[-] A^aa aA aA aA
c@A^[-] BaaBaa} A^c

Practical Nursing

52-weeks (Lockport only)

Y^aaB[-] * A/L[-] A^A q~ a^A A@[-] EA
|aaA^aaBaaBaa aA^] A^ca^a/Ba BaaA
qAaaBaa AU] ia * AEG5BAUC a^] A
j[-] A^A Aaa^A@A^aa AU] aaBaaA
B^[-] q * AaaA^] A^Aaa BAO[-] A^A A
A^a aaA^ A^aa^aa AU] a^] A^aaE

**5J5-66@BASED ON
INTEREST**

**SYM Jm i UX
: cf Th
7DF #: Jfgh5X**

Home Health Aide 100 hours

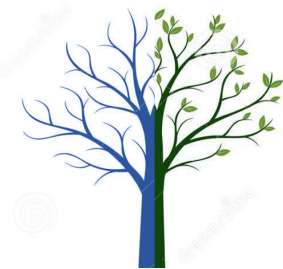
Personal Care Aide 50 hours

CNA to HHA Transition 35 hours



5^ WssYgUFYbased on enrollment! Call bck hcYofc~!

716-731-6800 and ask for Adult Education



**Tuition depends on program—Call for details
716-731-6800 Ask for Adult Education
Apply NOW for funding!**

Self-Pay

You or your family can pay the tuition yourself

Employer

Your employer might be willing to sponsor you to improve your skills. Check with your HR department.

Union

Those who belong to a union might have access to scholarships for themselves or a dependent.

WIOA

Workforce grants are available to fund training for high-needs jobs. **APPLY NOW** through the Employment and Training Office in your county of residence

Pathstone

Financial support is available for Orleans and Niagara County residents who have worked in agriculture in the last 24 months

ACCES-VR

Those with learning, mental health or physical challenges might qualify for ACCES-VR. See a Counselor **soon**.

Veterans Benefits

Military veterans and their relatives might be eligible for Veterans Educational Waivers.

Classes are open to HS graduates or out-of-school youth!

GED/ESL/Literacy classes available in Lockport, Niagara Falls, North Tonawanda, Albion, Medina, Waterport

Enroll with a friend or relative to share transportation!

